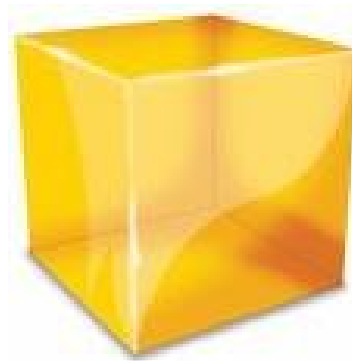




# The QUBE



## Quality Intelligence



# Introduction

The **Q**UBE provides  
**Quality Information** in  
Near-Time for Decision  
Makers

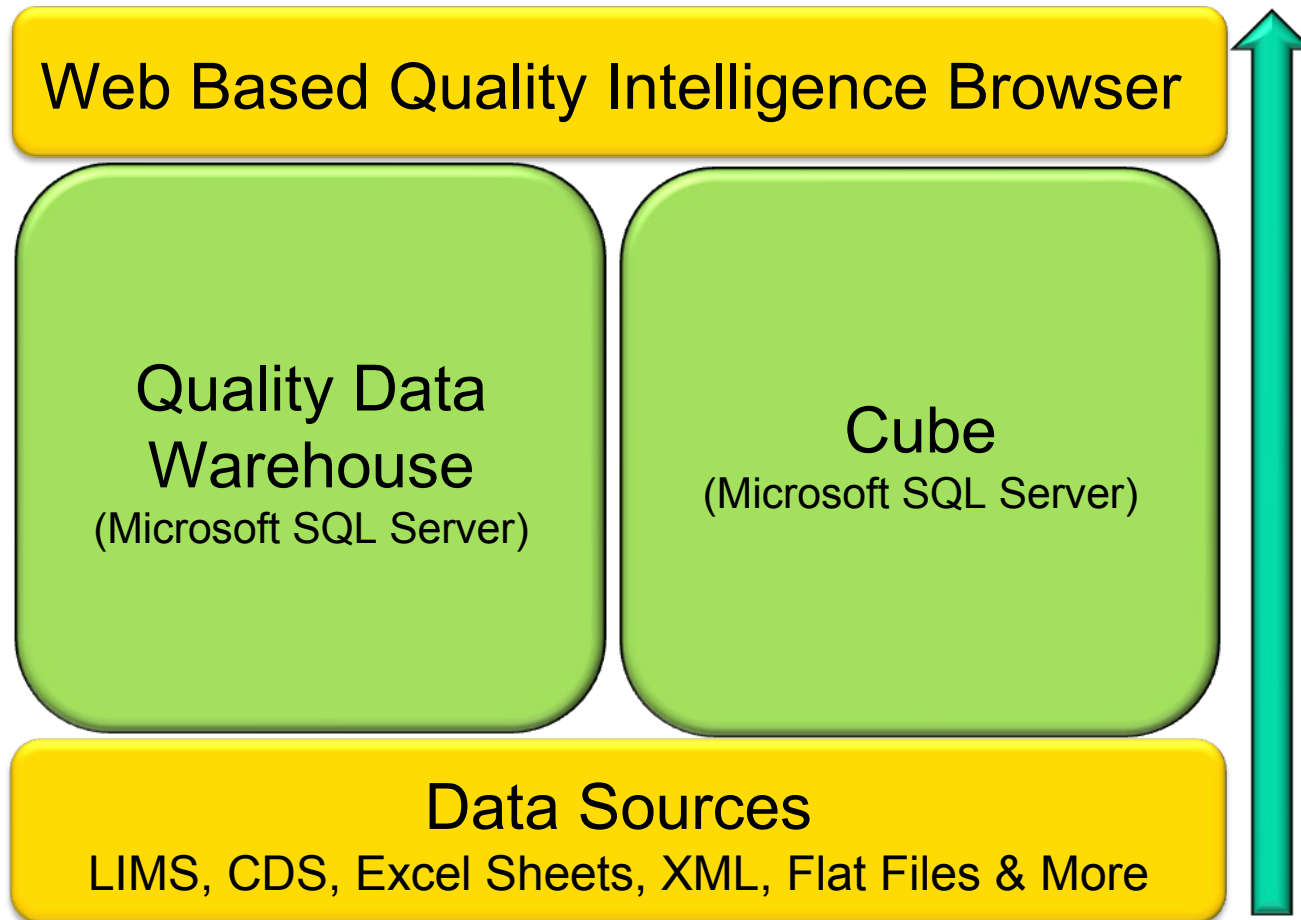


# Business Case



- **Leverage the Investment in existing Quality Systems (e.g. LIMS)**
- **Empower Decision Makers with easy to Interrogate Data**
- **Tedious Data Extraction and Processing is Eliminated**
- **Identifies Trends in the Data that enable:**
  - Resource Optimisation
  - Rework and Retesting Reduction
  - Problem Anticipation
  - Waste Reduction
  - Increases Margins

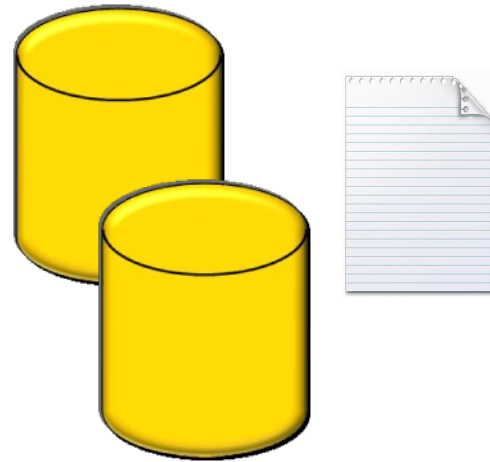
# Architecture



# Data Sources

- **Quality Data**

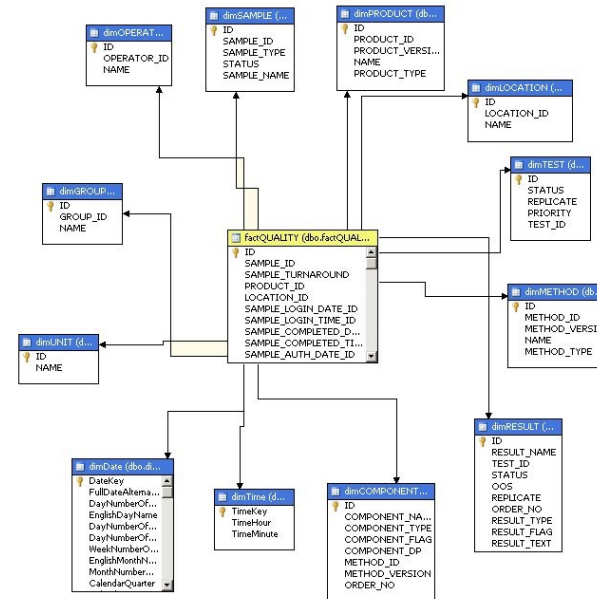
- LIMS
- CDS
- Excel Files
- XML Files
- Flat Files
- Access Databases
- Legacy Systems



```
<?xml version="1.0"?>  
<QualityData>  
</QualityData>
```

# Data Warehouse

- A Staging Area where all Quality data is placed and structured to facilitate Business Intelligence queries
- A Microsoft SQL Server Relational Database
- Automatically populated from the Data Sources on a Continuous basis
- Star structure where the points of the star are the Business Dimensions for Data Analysis e.g. By Product, By Date



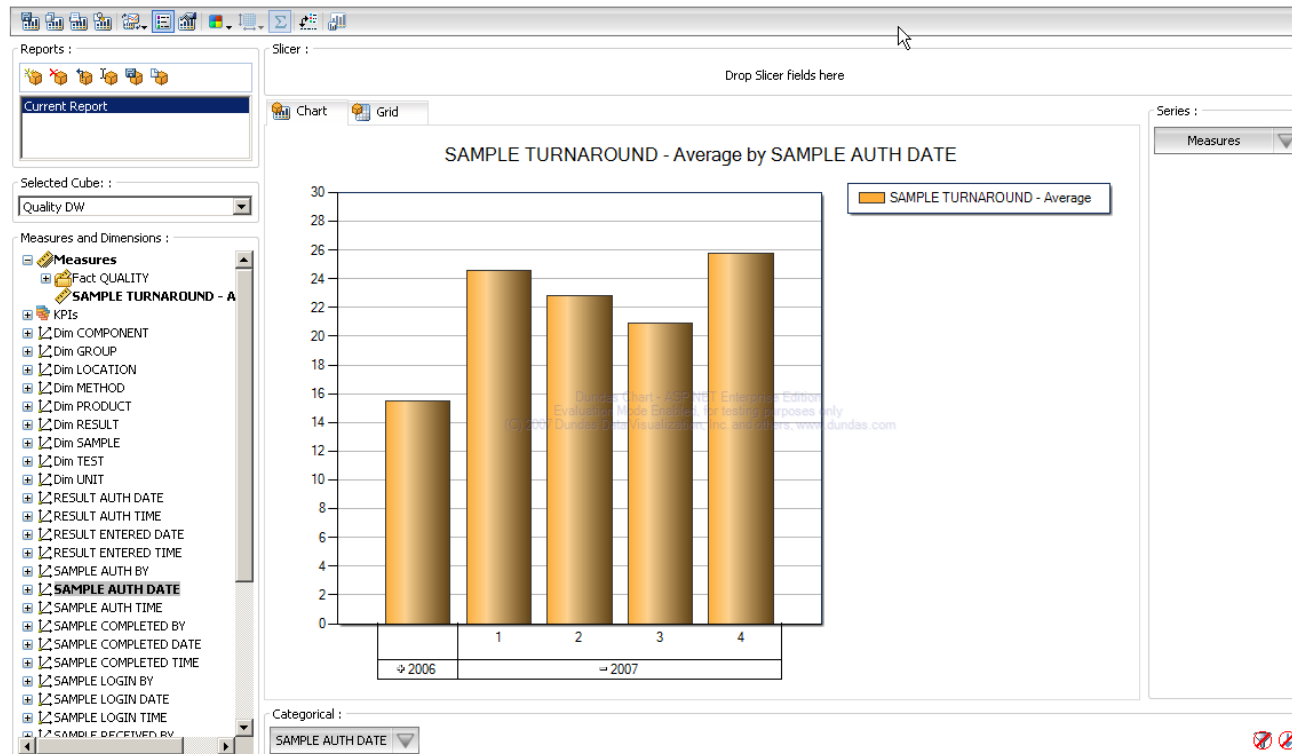
# The Qube



- **A Multi-Dimensional Microsoft SQL Server database that Automatically uses Data from the Warehouse**
- **Logically stores information for Business Users**
- **Performs Aggregation of Data to enable very fast Querying of information by any available Criteria**
- **Queries from any Perspective (by product, method, Operator, Instrument, Date etc)**
- **Data Drill down to Expand the Information Profile**
- **Enables Trending and Prediction**

# Quality Intelligence Browser

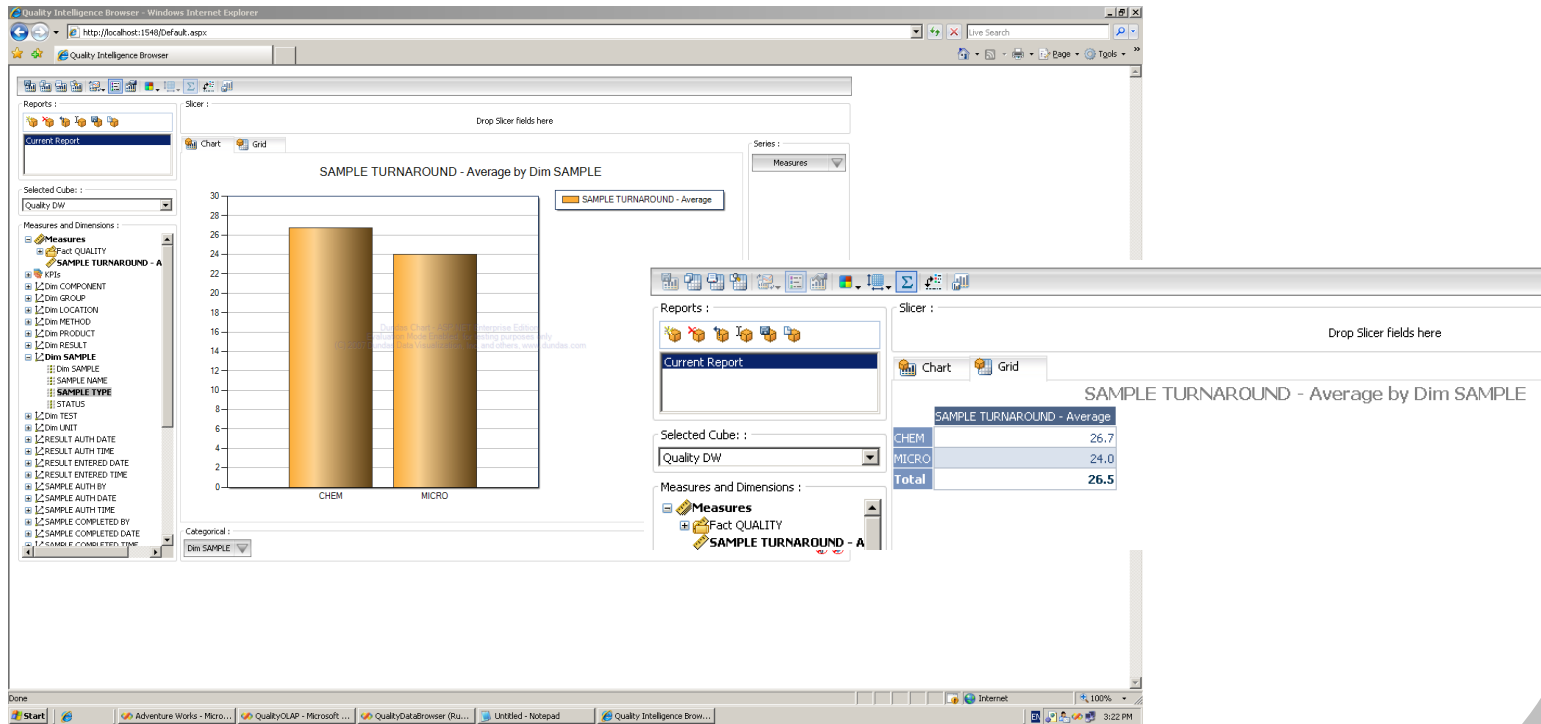
- **Web Based Cube Browser**
  - Simple to Use Drag and Drop interface
  - Intuitive to Business Users



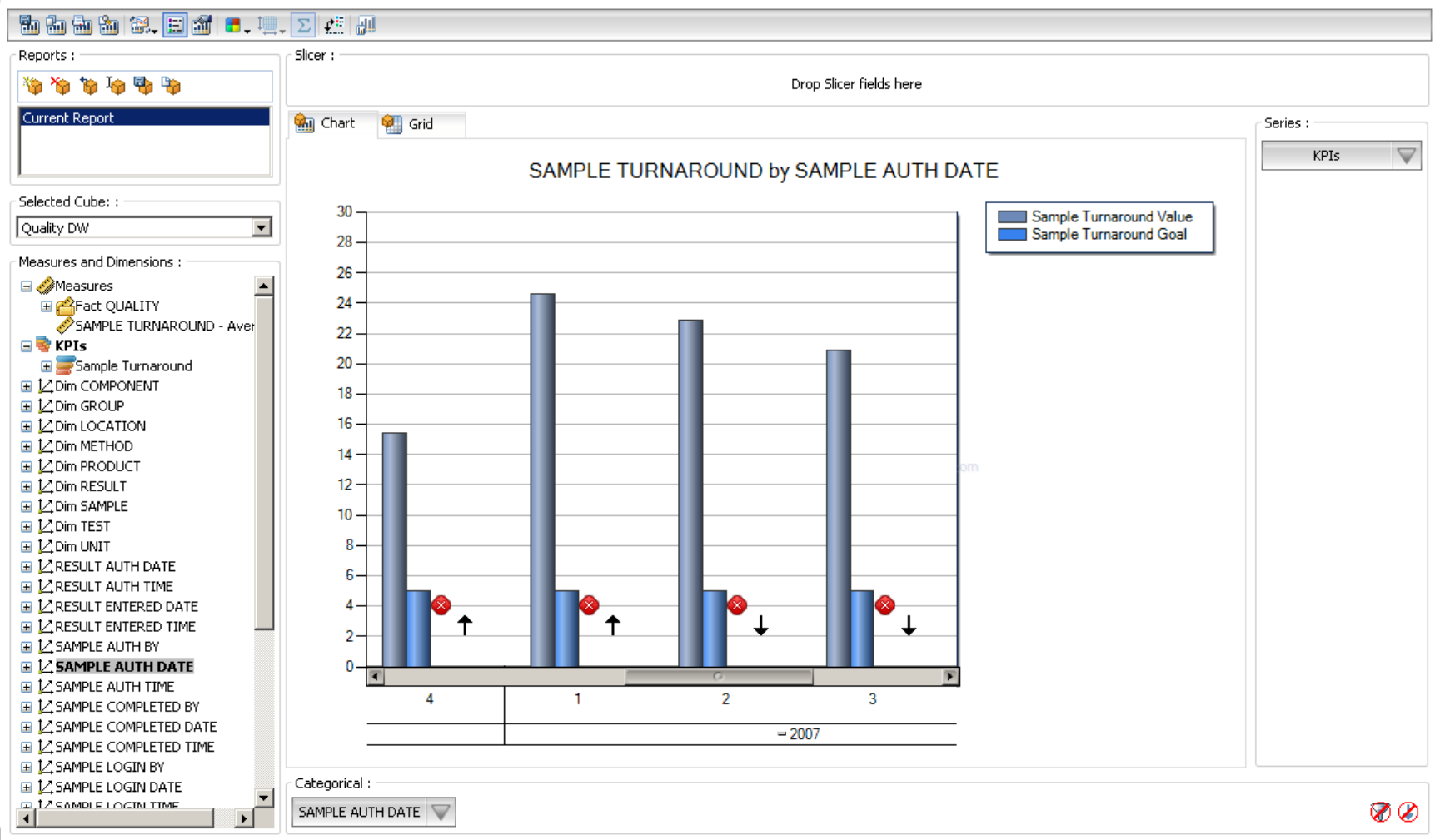
# Quality Intelligence Browser

- **Charts and Grids**

- Visualise data in a grid or chart (or both)
- Correlate for Comparison along separate series
- Drill down



# Quality Intelligence Browser





# Value Proposition



- **Business Intelligence in Near or Real-time**
- **Intelligence on Turnaround Times, Costs, Product quality**
- **Early Detection of Problems**
- **Immediate and Easy-to-Get Information**
- **Cost Effective Solution**
- **Developed using years of Experience of the Laboratory and Manufacturing**